

EXPLANATION

COUNTY LINE

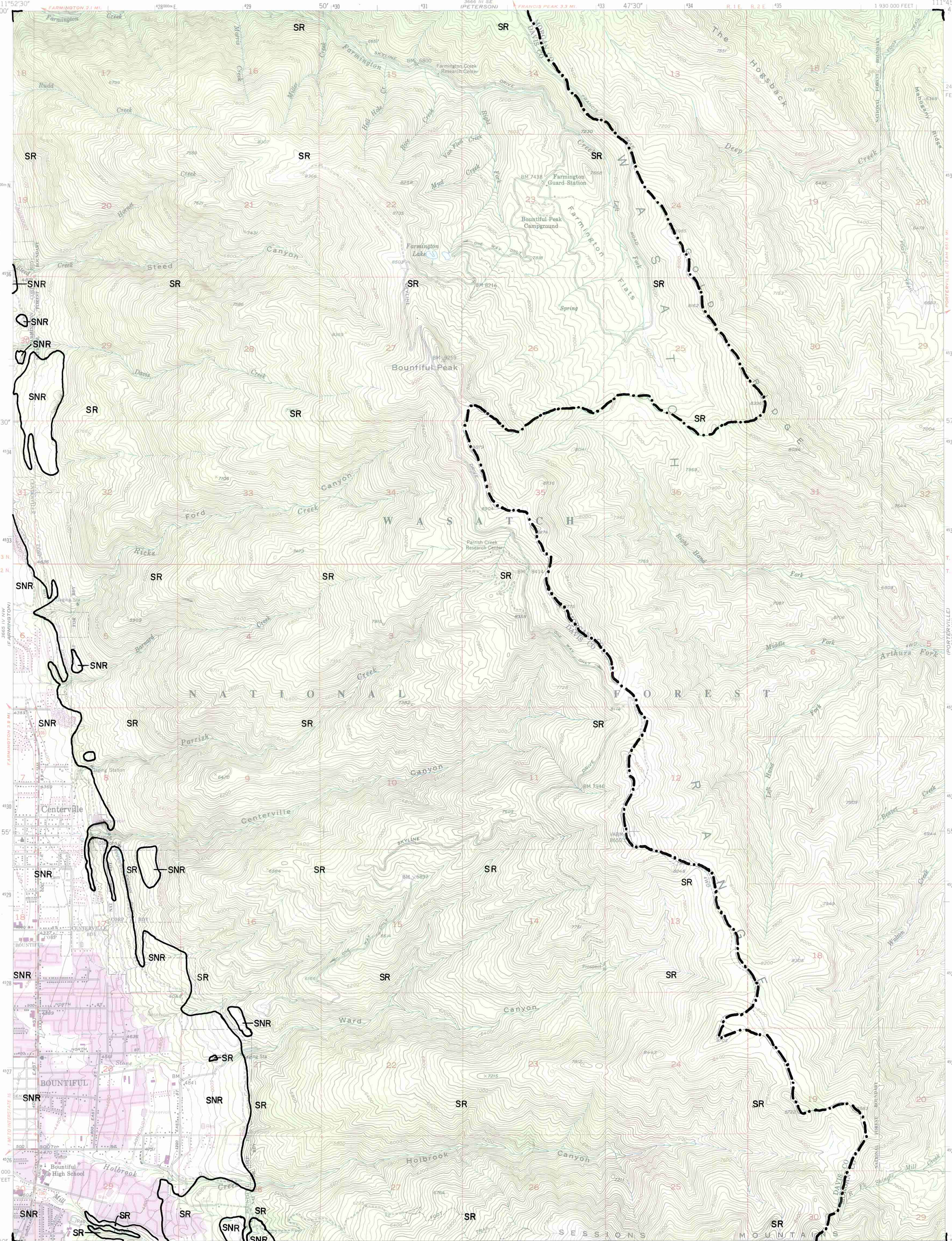
LANDSLIDE HAZARD

BOUNDARY

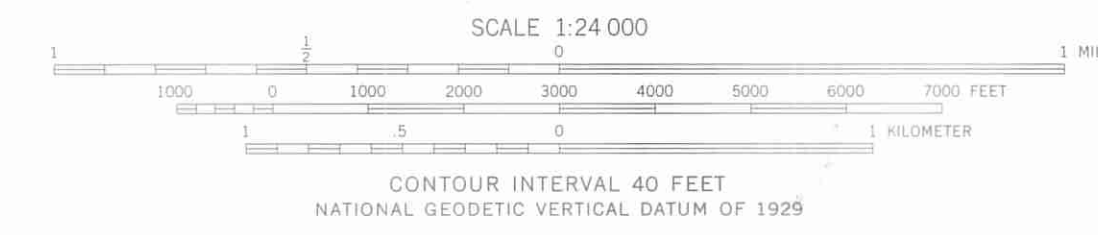
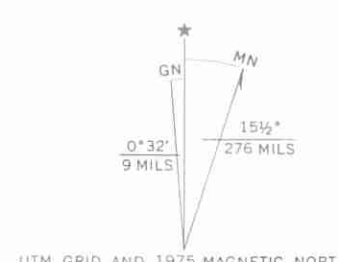
SNR=area where  
landslide-hazard  
special studies are  
not required.

SR=area where  
landslide-hazard  
special studies  
are recommended.

Landslide-hazard  
boundary compiled  
from slope and  
existing landslides  
by Mike Lowe,  
Davis County  
Geologist, 1989.  
For locations of  
prehistoric and  
historic landslides,  
see Slope-failure  
Inventory Map -  
Bountiful Peak  
Quadrangle.



Produced by the United States Geological Survey  
in cooperation with State of Utah  
Control by USGS and NOS/NOAA  
Compiled from aerial photographs taken 1950  
Field checked 1952  
North American Datum of 1927 (NAD 27). Projection and  
10000-foot grid ticks: Utah Coordinate System, north zone  
(Lambert Conformal Conic). 1000-meter Universal Transverse  
Mercator grid ticks, zone 12, shown in blue  
The difference between NAD 27 and North American Datum of  
1983 (NAD 83) for 7.5 minute intersections is given in USGS  
Bulletin 1875. The NAD 83 is shown by dashed corner ticks  
There may be private inholdings within the boundaries of the  
National or State reservations shown on this map  
Red tint indicates areas in which only landmark buildings are shown  
Revisions shown in purple compiled from aerial photographs  
taken 1969 and 1975. This information is not field checked  
Purple tint indicates extension of urban areas



THIS MAP COMPLIES WITH NATIONAL MAP ACCURACY STANDARDS  
FOR SALE BY U. S. GEOLOGICAL SURVEY, DENVER, COLORADO 80225, OR RESTON, VIRGINIA 22092  
A FOLDER DESCRIBING TOPOGRAPHIC MAPS AND SYMBOLS IS AVAILABLE ON REQUEST

BOUNTIFUL PEAK, UTAH  
40111-H7-TF-024

1952  
PHOTOREVISED 1969 AND 1975  
DMA 3665 IV NE-SERIES V897