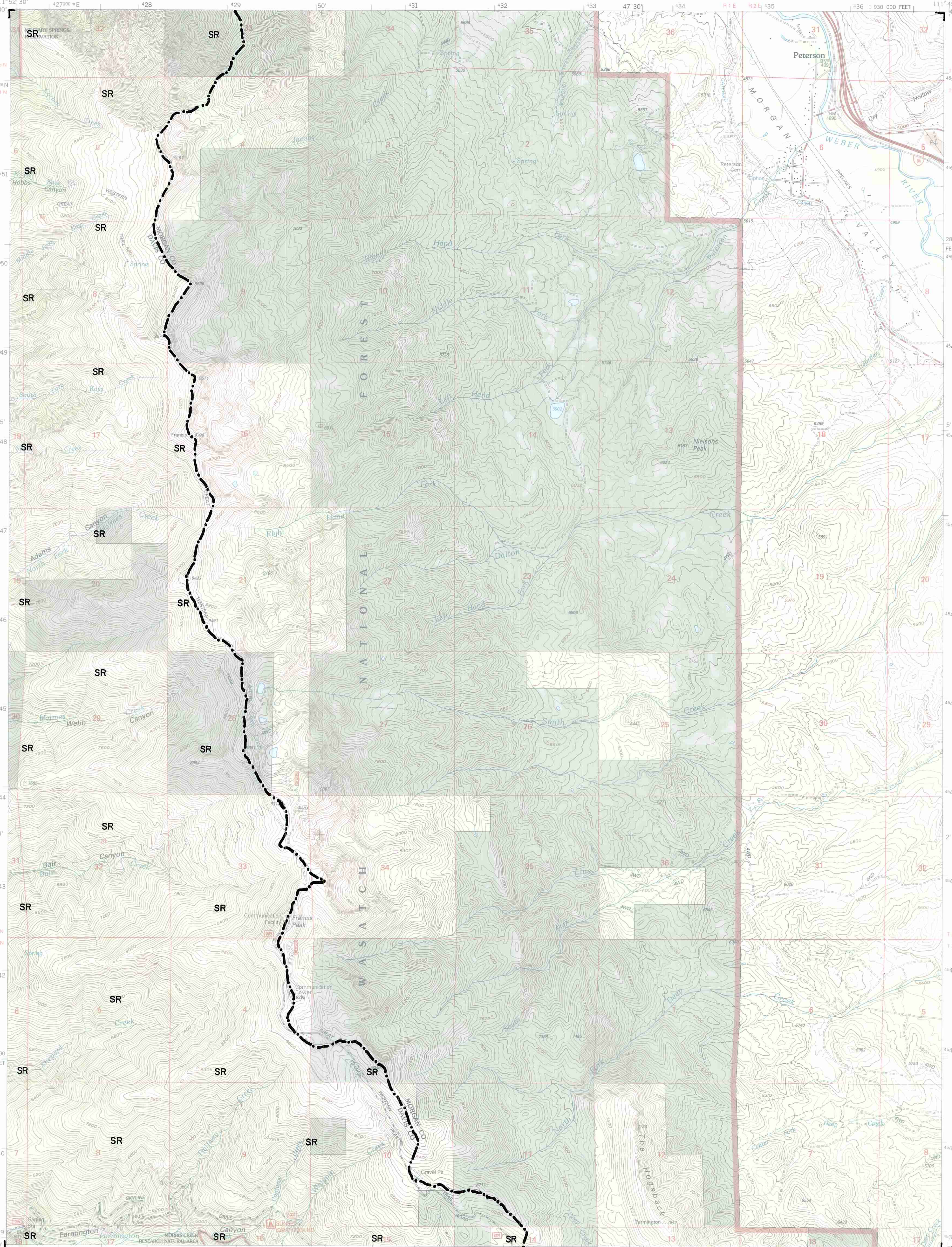


**EXPLANATION**

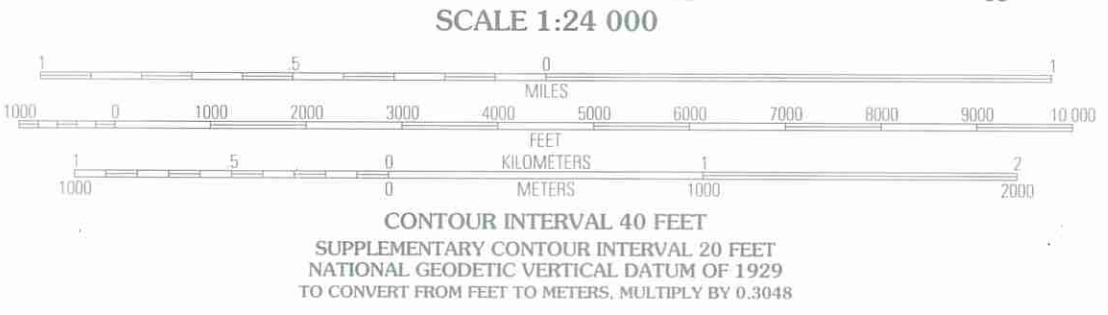
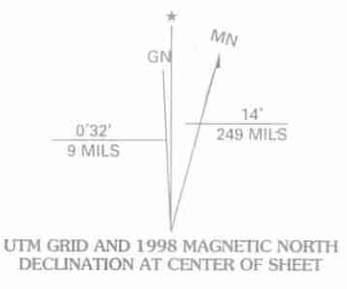
LANDSLIDE-HAZARD  
BOUNDARY AND  
COUNTY LINE

SR=area where  
landslide-hazard  
special studies  
are recommended.

Landslide-hazard  
boundary compiled  
from slope and  
existing landslides  
by Mike Lowe,  
Davis County  
Geologist, 1989.  
For locations of  
prehistoric and  
historic landslides,  
see Slope-Failure  
Inventory Map -  
Peterson Quadrangle.



Produced by the United States Geological Survey 1991  
Revision by USDA Forest Service 1998  
Topography compiled 1953. Planimetry derived from imagery taken 1997  
and other sources. Public Land Survey System and survey control current  
as of 1998.  
North American Datum of 1927 (NAD 27). Projection and 10 000-foot ticks:  
Utah coordinate system, north zone (Lambert conformal conic)  
Blue 1000-meter Universal Transverse Mercator ticks, zone 12  
North American Datum of 1983 (NAD 83) is shown by dashed corner ticks  
The values of the shift between NAD 27 and NAD 83 for 7.5-minute  
intersections are obtainable from National Geodetic Survey NADCON software  
Non-National Forest System lands within the National Forest  
Inholdings may exist in other National or State reservations  
This map is not a legal land line or ownership document. Public lands are  
subject to change and leasing, and may have access restrictions; check  
with local offices. Obtain permission before entering private lands



QUADRANGLE LOCATION

1	2	3	1 Ogden
4	5	6	2 Snow Basin
7	8	9	3 Durr Mountain
			4 Kayville
			5 Morgan
			6 Farmington
			7 Bonifield Peak
			8 Fossilville
			9 Farmington

ADJOINING 7.5 QUADRANGLES

HIGHWAYS AND ROADS

Interstate	Primary highway
U. S.	Secondary highway
State	Light-duty road
County	Composition: Unspecified
National Forest, suitable for passenger cars	Paved
National Forest, suitable for high clearance vehicles	Gravel
National Forest Trail	Dirt
	Unimproved; 4 wheel drive
	Trail
	Gate; Barrier

THIS MAP COMPLIES WITH NATIONAL MAP ACCURACY STANDARDS  
FOR SALE BY U.S. GEOLOGICAL SURVEY, P.O. BOX 25286, DENVER, COLORADO 80225  
A FOLDER DESCRIBING TOPOGRAPHIC MAPS AND SYMBOLS IS AVAILABLE ON REQUEST

PETERSON, UT  
1998  
NMA 3666 III SE-SERIES V897

