



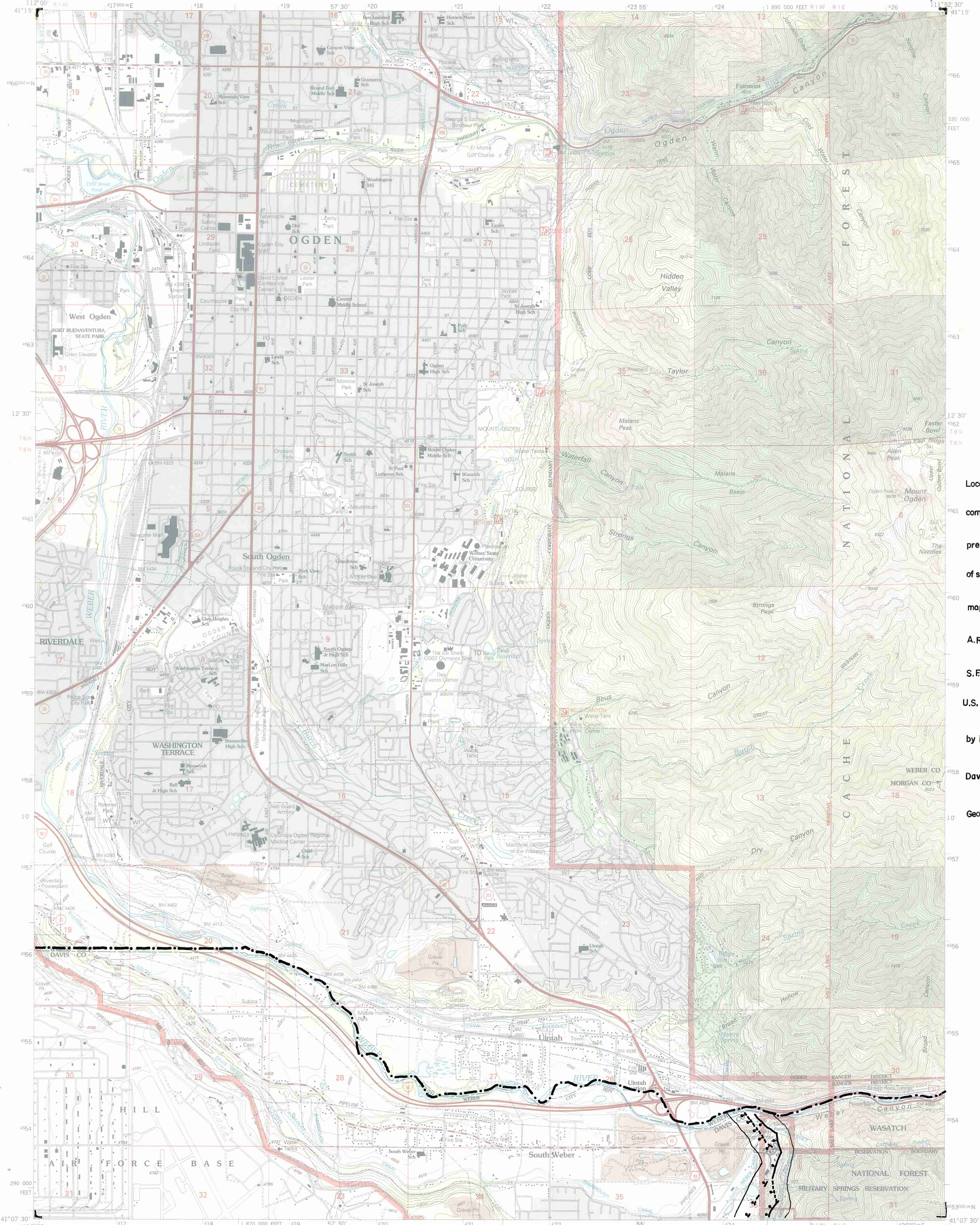
POTENTIAL SURFACE-FAULT RUPTURE SENSITIVE AREA OVERLAY ZONE - OGDEN QUADRANGLE

U.S. DEPARTMENT OF THE INTERIOR
U.S. GEOLOGICAL SURVEY

EXPLANATION

FAULT - ball on down-dropped side
COUNTY LINE - - - - -
STUDY AREA BOUNDARY

OGDEN QUADRANGLE
UTAH
7.5-MINUTE SERIES (TOPOGRAPHIC)

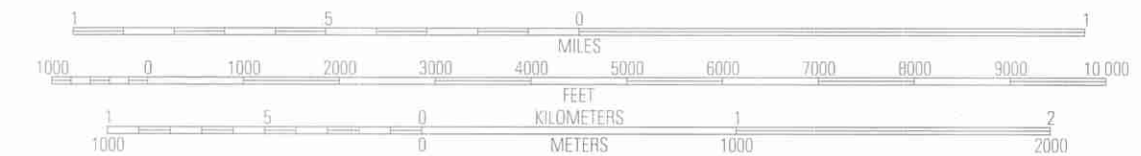


Location of faults
compiled from
preliminary drafts
of surficial geologic
mapping by
A.R. Nelson and
S.F. Personius,
U.S. Geological Survey,
by Mike Lowe,
Davis County
Geologist, 1989.

Produced by the United States Geological Survey 1992
Revision by USDA Forest Service 1998
Topography compiled 1954. Planimetry derived from imagery taken 1997 and other sources. Public Land Survey System and survey control current as of 1998.

North American Datum of 1953 (NAD 27). Projection and 10 000-foot ticks: Utah coordinate system, north zone (Lambert conformal conic); Blue 1000-meter Universal Transverse Mercator ticks, zone 12
North American Datum of 1983 (NAD 83) is shown by dashed corner ticks. The values of the shift between NAD 27 and NAD 83 for 7.5-minute intersections are obtainable from National Geodetic Survey NADCON software.

Non-National Forest System lands within the National Forest
Inholdings may exist in other National or State reservations
This map is not a legal land line or ownership document. Public lands are subject to change and leasing, and may have access restrictions; check with local offices. Obtain permission before entering private lands
Landmark buildings verified 2000



CONTOUR INTERVAL 40 FEET
SUPPLEMENTARY CONTOUR INTERVAL 10 FEET
NATIONAL GEODETIC VERTICAL DATUM OF 1929
TO CONVERT FROM FEET TO METERS, MULTIPLY BY 0.3048



QUADRANGLE LOCATION

1	2	3
4	5	6
7	8	

Interstate	Primary highway
U. S.	Secondary highway
State	Light-duty road
County	Composition: Unspecified
National Forest, suitable for passenger cars	Gravel
National Forest, suitable for high clearance vehicles	Dirt
National Forest Trail	Unimproved, 4 wheel drive
	Trail
	Gate; Barrier

THIS MAP COMPLIES WITH NATIONAL MAP ACCURACY STANDARDS
FOR SALE BY U.S. GEOLOGICAL SURVEY, P.O. BOX 25286, DENVER, COLORADO 80225
A FOLDER DESCRIBING TOPOGRAPHIC MAPS AND SYMBOLS IS AVAILABLE ON REQUEST

OGDEN, UT
1998
NIMA 3666 III NW-SERIES V897

